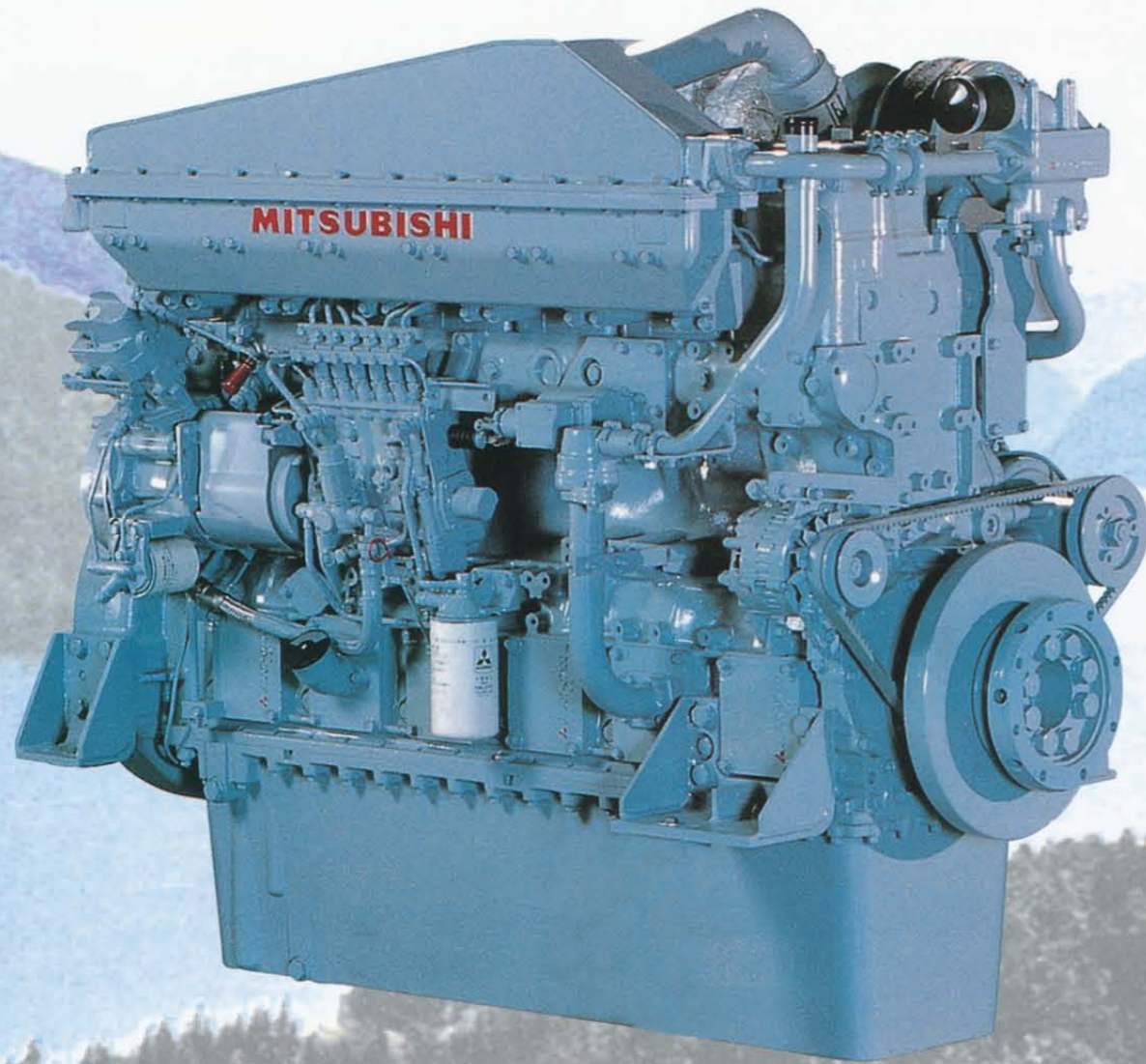


Custom-Built Quality



MITSUBISHI
ENGINES

designed by: Mitsubishi



ENGINES FOR TOP PERFORMANCE, STRONG, RELIABLE AND ECONOMICAL

For many years, Mitsubishi marine diesel engines have had a very reputable name in the coastal trade, the fishing industry and inland shipping. Technological masterpieces, the result of intensive research and continuous development to improve the already high quality.

The range includes main propulsion and auxiliary engines with capacities varying from 190 kW to 2,100 kW for high-speed engines and from

approximately 700 kW to 2,940 kW for medium-speed engines.

If required, the engines can be supplied in custom-built versions.

Mitsubishi engines are quality power sources with inherent extreme reliability in all circumstances, combined with a long life, economical operation and easy servicing thanks to good accessibility.

Excellent price/performance ratio

Mitsubishi marine diesel engines stand out because of their high level of performance and attractive price. Their long life and reliability ensures that Mitsubishi engines more than pay for themselves. This is emphasised by the four features described below.

Proven reliability

Thousands of Mitsubishi engines demonstrate their reliability every day. More and more large shipping companies are turning to Mitsubishi engines to power their fleet, and many private owners are appreciating the qualities of these power units.

Light and easy to service

Despite their durability above par, a characteristic of Mitsubishi engines is their light weight. This means that carrying capacity is not affected any more than is absolutely necessary. Also, the engines are incredibly simple to service. All the vital parts are easily accessible because of the sophisticated construction. Parts can also be replaced quickly so that delays can be kept to a minimum.

Guarantee of excellent service

A Mitsubishi diesel engine is not alone. An excellent service organisation is there to back it up. As the sole importer for Europe, M.E.E. and its distributors make sure that the Mitsubishi quality ideals are maintained, in the field of service and elsewhere. From reliable advice beforehand to servicing and fast supply and replacement of parts.

Economical in use

Mitsubishi engines have always been revolutionary in terms of fuel consumption. Since the end of the seventies, they have been the most economical engines on the market. This leadership has been maintained due to the result of the continuous introduction of new technology, combined with the development of new materials, injections systems, and turbo-chargers.

A clean exhaust is conducive to people and the environment!

Therefore they are an ideal power source!

Mitsubishi..... plain sailing.



MITSUBISHI
E N G I N E S

Marine propulsion and marine auxiliary engines - output selection

APPLICATIONS		PROPULSION USE			GENERATOR USE			GENERAL POWER USE					
		Rating	Light duty (kW/rpm)	Medium duty (kW/rpm)	Heavy duty (kW/rpm)	Continuous (kW)			Rated (kW)			Continuous (kW)	
1,200 rpm	1,500 rpm					1,800 rpm	1,200 rpm	1,500 rpm	1,800 rpm	1,200 rpm	1,500 rpm	1,800 rpm	
S6B	MPTA	283/2200	254/2100	231/2000	149	235	276	142	228	261	127	190	231
	MPTK	321/2200	298/2100	269/2000	190	257	298	179	246	283	160	224	261
S6B3	MPTA	385/2065	350/2000	320/1940	240	335	375	240	315	360	215	285	320
	MPTK	415/2065	380/2000	345/1940	270	355	410	270	335	390	245	300	350
S6A3	MPTA	435/1960	395/1900	360/1840	315	400	460	315	380	440	285	340	395
	MPTK	490/1960	445/1900	405/1840	320	430	475	320	420	455	290	380	410
S6R	MPTA	570/1800	485/1650	440/1600	380	515	595	365	490	570	330	445	510
	MPTK	605/1800	520/1650	470/1600	420	545	635	400	520	605	365	475	550
S6R2	MPTA	565/1500	490/1400	445/1350	480	595		465	565		425	515	
	MPTK	610/1500	530/1400	480/1350	500	640		500	610		455	555	
S12A2	MPTA	776/2100	701/2000	634/1940	545	679	761	507	642	709	448	582	642
	MPTK	858/2100	776/2000	701/1940	552	709	828	522	671	776	470	604	701
S12R	MPTA	1140/1800	970/1650	880/1600	760	1110	1190	730	1110	1140	660	990	1030
	MPTK	1210/1800	1040/1650	940/1600	840	1120	1270	800	1120	1210	730	1010	1100
S16R	MPTA	1520/1800	1290/1650	1170/1600	1020	1480	1590	970	1300	1520	880	1180	1360
	MPTK	1610/1800	1380/1650	1250/1600	1120	1500	1690	1060	1380	1610	970	1260	1460
	MPTK-2	1790/1800											

Rating instructions

Propulsion use Light duty

This rating is intended for use in variable load applications where the average load does not exceed the heavy duty rating. Full throttle operation does not exceed 1 hour out of 6 hours.

Propulsion use Medium duty

This rating is intended for use in applications where the average load does not exceed the heavy duty rating. Full throttle operation does not exceed 8 hours in any 24 hours period.

Propulsion use Heavy duty

This rating is the 24 hours continuous rating and is intended for use in applications requiring uninterrupted service.

Generator use

This rating is applicable for supplying electric power continuously, 10% overload is permissible for one hour out of 12 hours.

All figures are subject to change without prior notice.

Distributed by

07/04



DAMSLUISWEG 2 NL 1332 EC ALMERE
P.O. BOX 30101 NL 1332 AC ALMERE
TEL.: +31-36 5388311 FAX: +31-36 5388342
www.mitsubishiengines.nl

