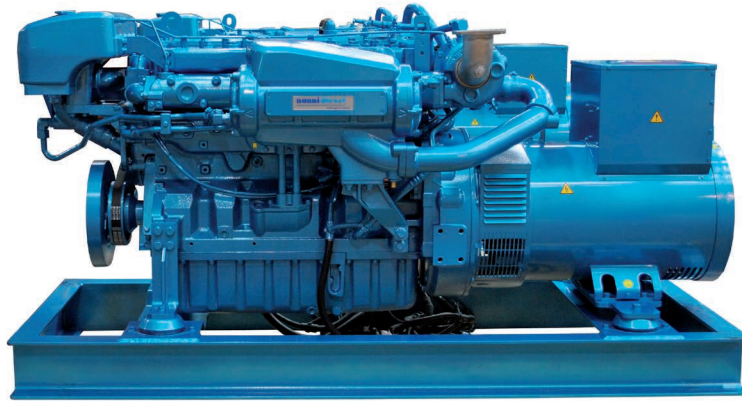


QLS102T

SPECIFICATIONS



Frequency	50 Hz	60 Hz	Engine base	John Deere
Voltage	400 V	480 V	Cooling system	Seawater pump with rubber impeller
Amperes	136 A cont. 163 A max.	135 A cont. 162 A max.	Closed cooling	Heat exchanger
Power	82 kW cont. 98.4 kW max.	98 kW cont. 134.2 kW max.	Cylinders	6 in line
Protection		IP23	Start (cold temperature)	Super Glow System
Insulation		Class H	Exhaust connexion (dry)	117.5 mm [4.6 in]
Voltage accuracy		± 0.5%	Fuel consumption at full load	23.9 l/h [6.3 gal US/h]
Radio interference		Deleted	Sea water pump connexion	50 mm [2 in]
Lenght	1892 mm [74.5 in]		Fuel pump - Max suction height	std pump : 0.5 m [19.7 in] with add. pump : 1.8 m [70.9 in]
Width	702 mm [27.6 in]		Engine operating angle	15° cont. 30° max.
Height	1106 mm [43.5 in]		Fuel connexion	10 mm [0.4 in]
Dry weight	1273 kg [2806.5 lbs]			

QLS102T

98.4 kW max. at 1500 rpm

134.2 kW max. at 1800 rpm

TECHNICAL DESCRIPTION

ENGINE BASE

- 4 strokes Diesel engine tested in all marine or industrial applications throughout the world.
- Replaceable wet-type cylinder liners giving an excellent heat dissipation for long life.
- Internal balancer.

INJECTION AND COMBUSTION SYSTEM

- Proven and reliable Mechanical Governor
- High torque and low rated rpm
- Electronically controlled rotary fuel injection pump with variable timing resulting in excellent fuel economy and excellent performance
- Self diagnostics and protection

COOLING SYSTEM

- Cooling is ensured by heat exchange between coolant and seawater in an heat exchanger, or via a Keel Cooling system.
- Reduced external connections eliminates hoses and fittings that can leak or break.
- Cooler and quieter environment for vessel and crew.
- Seawater pump with rubber impeller.

GENERATOR

- 50 Hz : delivering a continuous power of 82 kW and able to provide up to 98.4 kW
- 60 Hz : delivering a continuous power of 98 kW and able to provide up to 134.2 kW
- IP23 protection

STANDARD EQUIPMENT

- Closed cooling with heat exchanger
- Water-cooled manifold
- 24V Two-pole electrical system
- Baseframe
- Flexible mountings (dampers)
- Oil drain pump mounted on the engine
- Luxe GE panel

OPTIONAL EQUIPMENT

- Seawater hoses
- Seawater filter
- Siphon breaker
- Fuel feed system piping
- Leakproof injection piping
- Exhaust system
- Fuel prefilter
- Keel Cooling version
- Dry exhaust
- Engine heater
- Exhaust compensator
- Heating elements in generator
- Generator prepared parallel installation

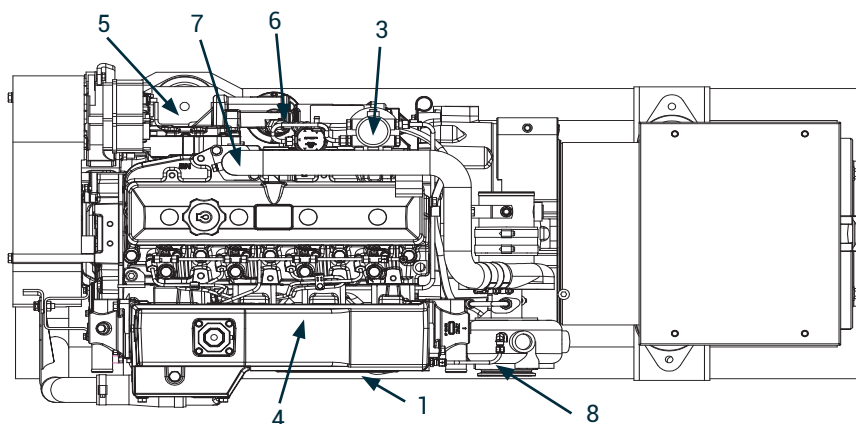
INSTRUMENT PANEL

LUXE GE



- Start and stop buttons
- Low oil pressure warning light
- Coolant temperature warning light
- Preheat warning light
- Battery charge warning light
- Oil pressure indicator
- Coolant temperature indicator

MAIN COMPONENTS



1. Oil drain pump
2. Fuel feed pump
3. Fuel filter
4. Heat exchanger
5. Seawater pump
6. Oil filter
7. Oil filter port
8. Exhaust elbow

NANNI INDUSTRIES S.A.S.

11, Avenue Mariotte - Zone Industrielle
33260 La Teste - France
Tel: +33 (0)5 56 22 30 60
Fax: +33 (0)5 56 22 30 79

Technical data according to ISO 8528. This document is not contractual. Nanni reserves the right to modify any of the characteristics stated in this document without notice, in a constant effort to improve the quality of its products. Images and illustrations may show non standard equipments. All combination of equipment & accessory are not available.

DGBXXC01169